



eDucLearning v5 Client server Installation guide

Database SQL Server 2005

**To be performed by a
Computer Technician**

March 4th, 2009



Concept Formula inc.

IMPORTANT NOTE: THIS INSTALLATION PROCESS IS USED AT YOUR OWN RISK. CONCEPT FORMULA CANNOT BE HELD LIABLE OF THE INTERPRETATION YOU MAKE OF THESE GUIDELINES NOR FOR THE CHANGES YOU MAKE TO YOUR SERVER DURING THE INSTALLATION PROCESS"

Introduction

This procedure allows you to install the downloadable version of **eDucLearning v.5** associated with a **SQL Server 2005** database. The procedure related to the configuration and integration of the database is manual, given that the characteristics and different configurations of client servers are unique to each client.

You are undertaking this procedure at your own risk. Concept Formula inc. cannot be held responsible for the manual changes that you will perform on your server during this installation process.

Warning

- ✓ This operation should be performed by a knowledgeable technician who understands database and database management concepts and applications.
- ✓ The database must be accessible on an **SQL Server 2005**.
- ✓ This operation is done using the **SQL Server Management Studio** software or any other software that allows to edit the database.

Installation Package

Concept Formula inc. provides:

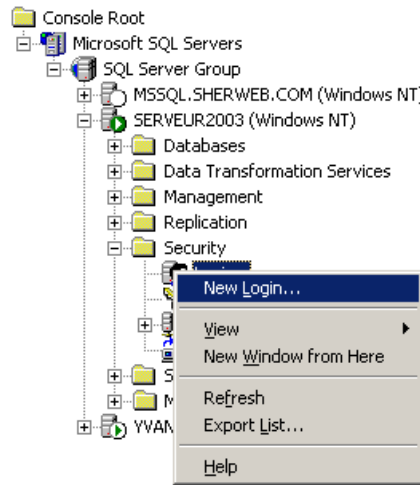
- ✓ The **eDucLearning** installation two files: **educ.msi** and **setup.exe**
- ✓ A license file **licence.txt** detailing the rights purchased by your organisation
- ✓ Two database starting files: **concept_data.mdf** and **concept_log.mdf**
- ✓ An instruction file for the installation of **eDucLearning** and the database: **ENeDucLearning_InstallationV5.pdf**

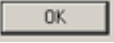
Procedure

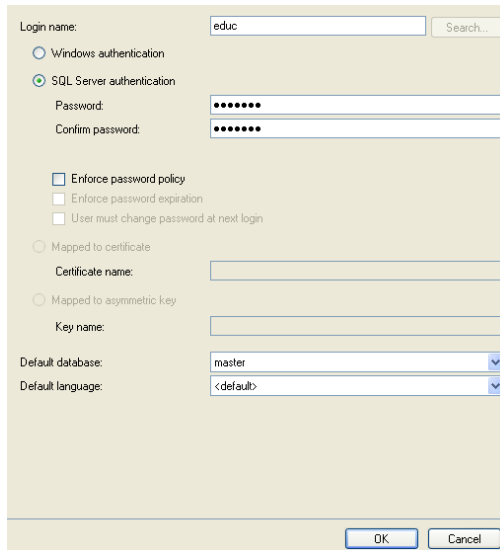
Phase I : Attaching the database to the SQL Server 2005

1. Copy the two files **concept_Data.mdf** and **concept_log.ldf** where you need them. Ex.: C:\Programs\Microsoft SQL Server\ MSSQL)
2. Launch the **SQL Server Management Studio** program. (**Start/Programs/Microsoft SQL Server 2005/SQL Server management Studio**). The window **Microsoft SQL Server Management Studio** opens.
3. If needed, open the folder containing **SQL Server Group** and select the server where you want to install your database.

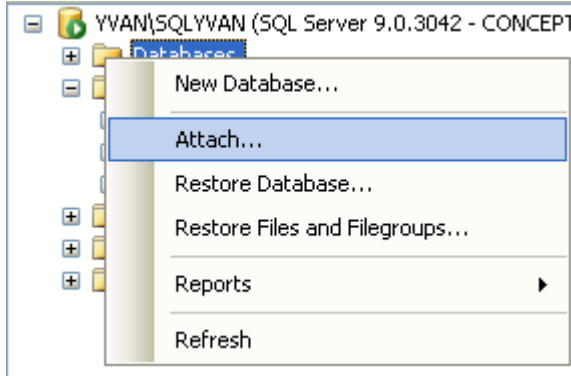
- Open the folder **Security** and click the right button on the option **login** and select **New Login...**



- Enter **educ** in the field **Login name**. Click the radio button **SQL Server authentication** and enter (and confirm) a **Password** in the field **Password**. (Keep in mind the Password). Click on the button .

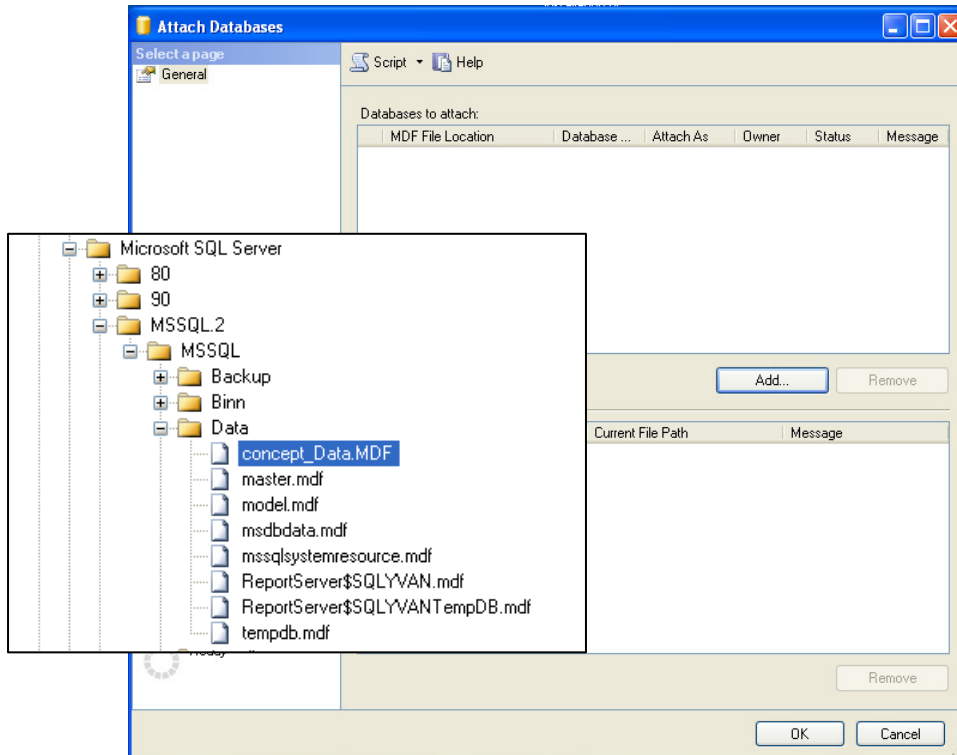



6. Click on the right button on the folder **Databases**, select **Attach** option.

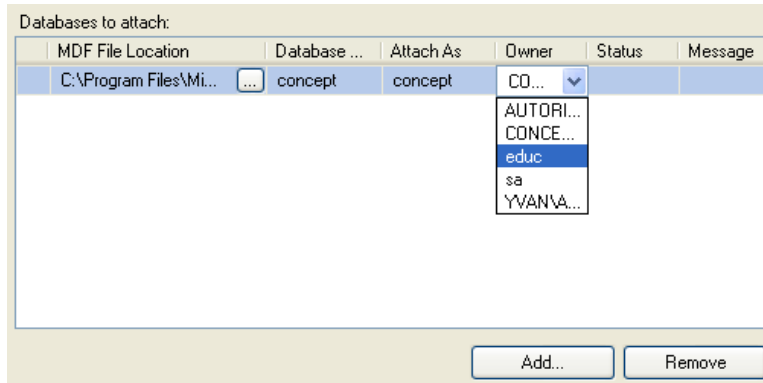


7. In the window **Databases to Attach**, click on the button **Add**. Locate the **concept_Data.MDF** file provides by **Concept Formula** (you can copy the file in the folder **Data** of **Microsoft SQL Server** as shown in the example).

Click on the button .



- Select **educ** in the scroll list **Owner** and click on the button  at the bottom of the window **Databases to Attach**. (The **Concept** database is now attached to the database server and the user **educ** is attached to the **Concept** database.)



- Close the **Microsoft SQL Server Management Studio** window.

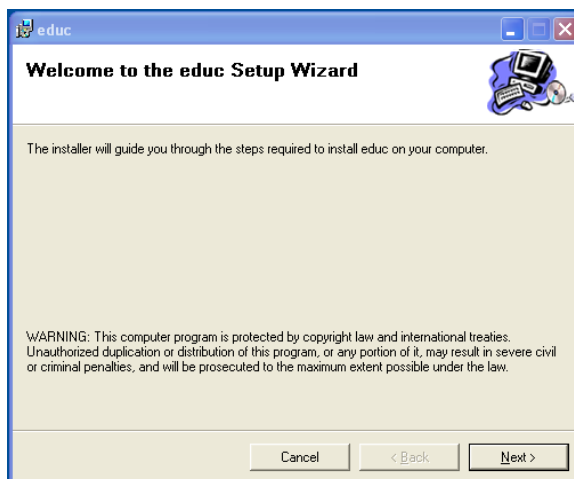
Phase II : Installation of eDucLearning and license


The installation of **eDucLearning** is automated. The installation of the license is manual.

- Double click on the file **setup.exe**. The installation window will display and the installation process will be initiated.

Note: The first part of the automated procedure can take up to one minute to load before the installation window appears on the screen.

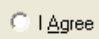

The window **Welcome to the educ Setup Wizard** will display.



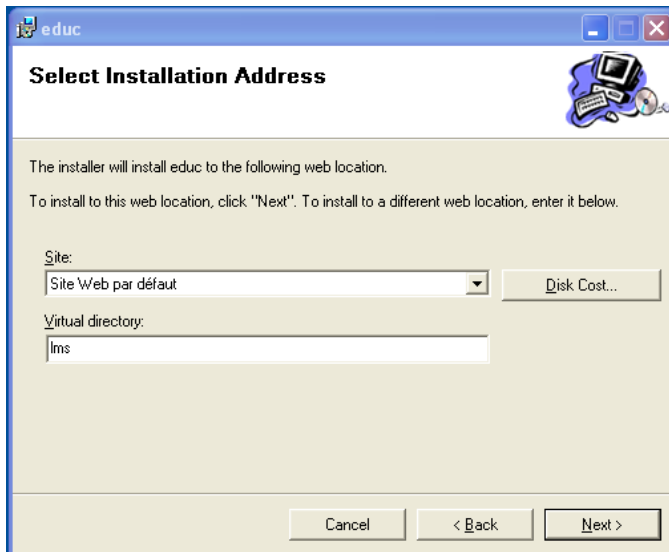
2. Click on the button .

The window **License Agreement** will display.




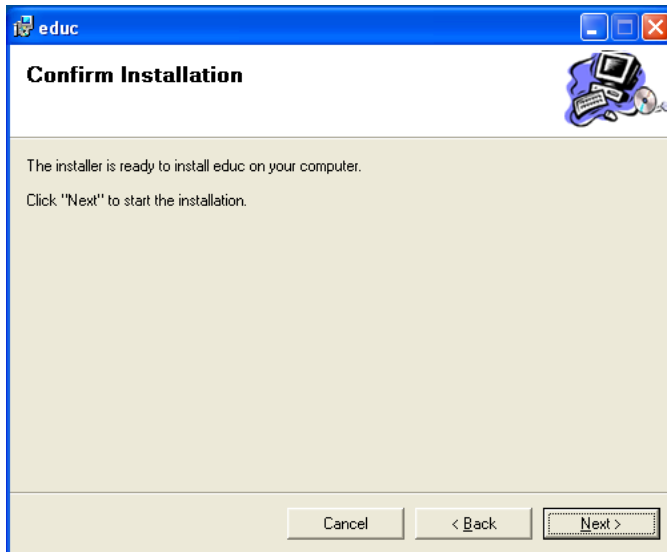
3. Click on the radio button  if you accept the license contract. Click on the button .

4. The window **Select Installation Address** will display:



Keeping the default parameters is recommended, however you can specify the installation location and the name of the virtual directory of your choice.

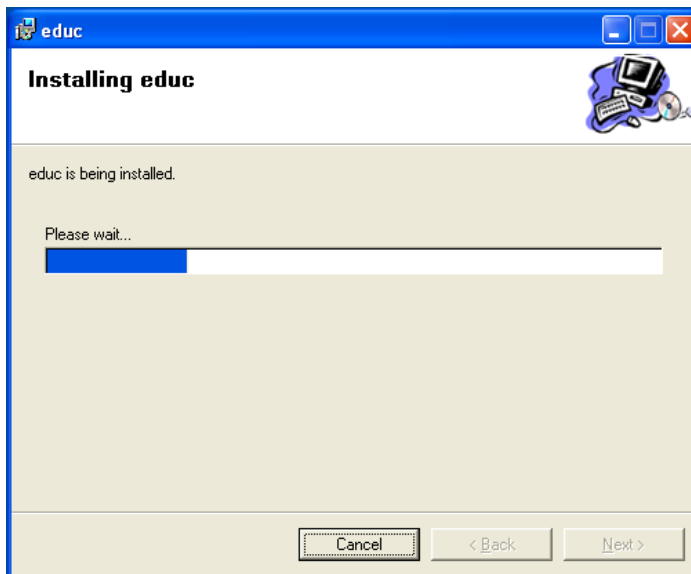
5. Click on the button .



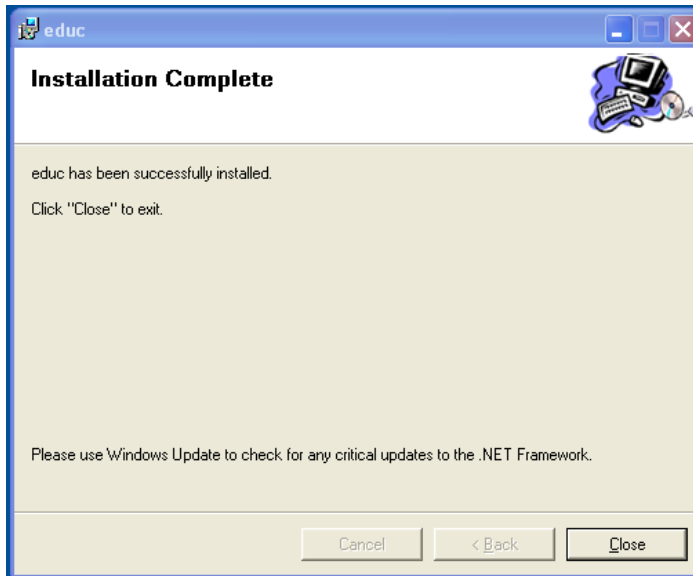
The installer indicates that the installation can begin.

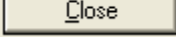
6. Click on the button  to start the installation process.

The window displaying progress will appear.



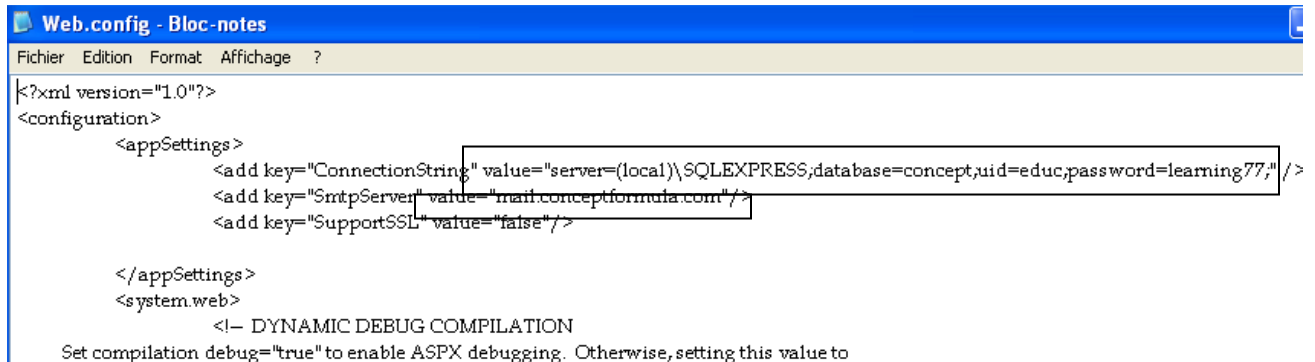
Once the installation is completed, the following window will be displayed.



7. Click on the button . The installation of **eDucLearning** is completed.
8. Copy the file **licence.txt** in the folder where **eDucLearning** has been installed. Usually, **eDucLearning** is installed in **C:\Inetpub\wwwroot\lms_engine**.

Phase III: Modification of the parameters

1. Select the folder **lms_engine** where **eDucLearning** is installed. (Usually eDucLearning is installed at **C:\Inetpub\wwwroot\lms_engine**).
2. Edit **Web.config** file.
3. Edit the following commands (about the first lines).



- server= (indicate the instance of your SQL Server 2005)
YOU MUST EDIT THIS PARAMETER
- database= (this is the name of the database attached to the server at step 7 of

Phase I)

YOU DON'T HAVE TO MODIFY THIS PARAMETER

- uid= (this is the login name as indicated at step 5 of Phase I)

YOU DON'T HAVE TO MODIFY THIS PARAMETER

- password= (this is the password indicated at step 5 of Phase I)

YOU MUST EDIT THIS PARAMETER

- value= « mail.conceptformula.com » (this is the SMTP mail server address uses to send automatic eMails via eDucLearning).

YOU MUST EDIT THIS PARAMETER

4. Save the file.

Phase IV : Access rights

It is necessary to give access rights for the folders **lms** and **upload**. Otherwise, eDucLearning will provide an error. (If you don't use MS Server 2003, ask your system administrator for assistance.)

1. Select the folder where the **LMS** is installed (usually **c:\inetpub\wwwroot\lms**)
2. Right button click on the LMS folder and select the **Sharing and Security...** option.
3. Select the **Security** tab.
4. If the user account **ASPNET Machine Account** is not in the list **Group or user names**, click on the button **Add** and add it.
5. Select the account **ASPNET Machine Account** in the list **Group or user names**.
6. In the list **Permissions for ASPNET Machine Account**, check the following option boxes: **Modify, Read & Execute, List Folder Contents, Read, Write**. Do the same with the **Network** account.
7. Click on the button **OK**.
8. Repeat the steps 2 to 7 with the folder **UPLOAD**.
9. Repeat the steps 2 to 7 with the account **IIS WPG** for the folder **UPLOAD**.
10. Repeat the same steps with the file **licence.txt** of the folder **lms_engine**.

eDucLearning is now installed with the license provided for your organisation.

YOU ARE NOW READY TO USE eDucLearning.

To launch eDucLearning :

1. Start Internet Explorer.
2. Enter : <http://localhost/lms/educ/default.htm> (or use your configuration)
3. The username and password for the administrator mode are :
admin1 master1

----- END OF PROCESS -----

IMPORTANT NOTE: THIS INSTALLATION PROCESS IS USED AT YOUR OWN RISK. CONCEPT FORMULA CANNOT BE HELD LIABLE OF THE INTERPRETATION YOU MAKE OF THESE GUIDELINES NOR FOR THE CHANGES YOU MAKE TO YOUR SERVER DURING THE INSTALLATION PROCESS"

Yvan Chouinard
Concept Formula inc.
www.conceptformula.com
yhouina@conceptformula.com
(418) 723-2444